



Update from the Consortium of Lancashire & Cumbria LMCs

Tuesday 22nd October

Help Us Grow Our Audience

We understand that you are busy and are likely to receive many emails on a daily basis. However it is important for you to receive communications from us because we can help and support you.

We know there are many colleagues who do not receive our brieflet, so please help us by sharing this with your team and letting us know to add them to our distribution lists.

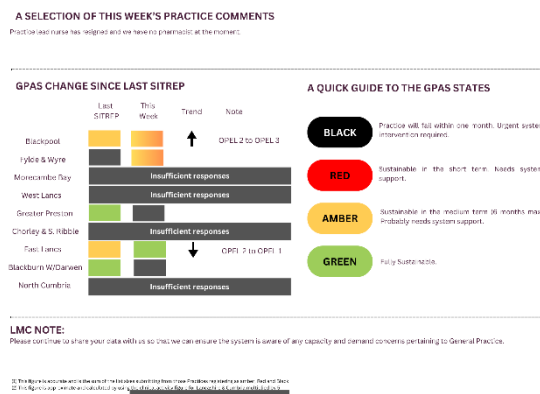
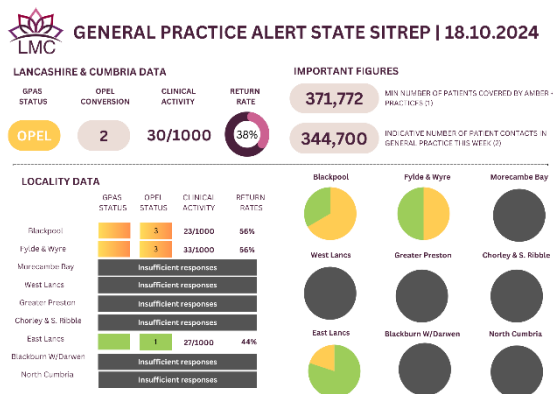
General Practice Alert State (GPAS)

You can see the latest SitRep results below. Results can also be found [on our website](#).

The data we do not receive prevents us from providing a robust picture to system partners and hinders our efforts to push for more support on your behalf.

We really appreciate you taking to the time to **help us to help you**.

[Please let us know](#) if you are a Practice Manager and do not receive the GPAS input emails.



Lower GI Blood Test Request - Fylde Coast Only

You will be aware that there has been an issue with path lab request form where the Lower GI blood test pre selected option had vanished. Your LMC has discussed this with the BTH lab manager and they advised that this was done at the request of the cancer alliance as the

colorectal and the Lower GI options had the same tests. We have therefore asked the path lab to add Lower GI to the colorectal option. which now appears like this:

Speciality: Colorectal/ Lower GI | Cancer Site: Standard



Framework on Clinical/Professional Supervision and Support for Additional Clinical Roles in General Practice - Lancashire and South Cumbria only

Please download the L&SC Framework on Clinical/Professional Supervision and Support for Additional Clinical Roles in General Practice [here](#).

The framework has been developed in collaboration with the LMC, L&SC Primary Care Providers at Scale, L&SC Primary Care Network Assembly and L&SC Training Hub, and with input from NHS England colleagues.

The framework is the first of its kind and it allows employers, GP practice teams and Primary Care Networks to review/evaluate their current supervision arrangements against the framework and work together to identify areas for safety and efficiency improvements. Whilst the framework is not prescriptive in nature, and does not need to be used in its entirety, it does support employers and practices in understanding their responsibilities when employing additional clinical roles, and how employers and practices can work together to support supervision and training of additional clinical staff.

By creating an opportunity for a more standardised approach to support and supervision across the system, the framework aims to improve patient care and safety, improve staff wellbeing, reduce staff turnover and support clinicians in their Primary Care journey. The framework also includes useful resources and practical modes of supervision which employers/practices could implement.

Primary & Secondary Care Interface Guidance - Lancashire and South Cumbria Only

Please find below 2 documents relating to the interface between Primary and Secondary Care for your information. The below have been developed with the LMC and we are expecting to see these policies implemented with support from L&SC ICB.

[Interface between Primary & Secondary Care](#)

[Interface between Primary & Secondary Care Poster](#)

Survey on the New Medical Examiner's Office - GP Feedback Requested

This is the reminder on the below surveys following the Medical Examiner's Office.

We would appreciate your feedback on the following aspects to help us gather insights and address any potential issues. Please **do not** include any patient identifiable information within your answers. This survey is open to all practice staff who have been involved in any interactions with the Medical Examiner's office.

Please click on the survey for your area below:

- [Central Lancashire – West Lancashire](#)
 - [Central Lancashire – Chorley & South Ribble/Preston](#)
 - [Lancashire Coastal](#)
 - [Lancashire Pennine](#)
 - [Morecambe Bay](#)
 - [North Cumbria](#)
-

Collective Action

The BMA [GP campaign page](#) has information about all of the current actions. Please also refer to their [SafeWorking Guidance Handbook](#) and other useful links such as [guidance for GP collective action](#), [background to the 24/25 contract changes](#), and [infographics](#) that can be displayed in your practices.

GP Additional Roles Reimbursement Scheme (ARRS)

[The updated PCN DES bringing in the GP ARRS was released last week](#). GPs employed via the Scheme must be within 2 years of their CCT on 1/10/24 and PCNs will be required to provide terms no less favourable than the BMA salaried GP model contract, in line with the GMS/PMS contract.

GPC England and the Sessional GPs Committee have released guidance for PCNs, and individuals employed under this scheme. It can be found [here](#).

Whilst there is progress in acknowledging the difficulties currently faced by many GPs struggling to find jobs, the BMA continue to stress to NHSE and the Department of Health the underlying issue of GP unemployment and how this needs to be better addressed through additional support and funding at a practice level, reinforcing the need for a new GP contract to support this.

Read the [blog by Dr Mark Steggles, Chair, Sessional GPs Committee](#)

GP Contract Changes and Implementation

Here is a reminder of what has been uplifted from this month: Global sum has been uplifted to £112.50 per weighted patient for GP practices to implement the DDRB uplift. Locum reimbursement rates have increased, along with the pay elements of workforce-related transformational funding.

From 1 October, newly qualified GPs can be recruited as part of the additional roles reimbursement scheme (ARRS) and PCNs can request the funding as outlined in the updated PCN contract DES. In addition, three other PCN funding streams have been increased to reflect the DDRB uplift: core PCN support, the care home premium service and the enhanced access service. The maximum reimbursement rates for existing ARRS staff have been uplifted with effect from 1 October to align with Agenda for Change pay scale uplifts.

GPs Vote in Favour of Phasing out Physician Associate Role in General Practice

Following the publication of the [GPC England](#) and [RCGP guidance](#) on the role of Physician Associates, the GPs Committee UK (GPC UK) met recently and discussed the role and safety of physician associates in General Practice. The committee overwhelmingly voted in favour of the motion below:

This meeting believes that the role of Physician Associates in General Practice is fundamentally unsafe and:

1. There should be no new appointments of Physician Associates in General Practice
2. The role of Physician Associates in General Practice should be phased out
3. The role of a Physician Associate is inadequately trained to manage undifferentiated patients, and there should be an immediate moratorium on such sessions.

The BMA believes that those in existing Physician Associate roles should be given opportunities to retrain into more suitable NHS roles, including the appropriate undergraduate and postgraduate training in medicine.

BMA GP Opinion Survey 2024

The latest BMA GP Opinion Survey has opened.

This annual survey gathers GPs' views on current issues and opportunities facing General Practice, helping to influence and inform this year's contract negotiations in addition to the BMA longer-term strategy of promoting and protecting the future of General Practice.

The survey is open to all GPs in England, including Partners, Salarieds, Locums, and GP registrars at ST3 and above. It is open to GPs working in all settings and practices, wider primary care roles, trusts, urgent care, and secure or out-of-hours settings.

Participants do not need to be a member of the BMA to participate but the BMA will need a GMC number to ensure that responses are coming from eligible GPs based in England. All responses will be anonymised.

The [survey](#) will close on Monday, 11 November at 9am. We urge you to complete the survey as soon as possible, to ensure GPC England's negotiating position is made as strong as possible.

Partnership Agreement Updates

Have you used our LMC Partnership Agreement Drafting Service in the past? Have you had any new partners joining or leaving since we drafted your agreement?

If so, we are happy to review and update your agreement for you. Please note that the agreements we drafted from the start date of our service will also likely need updating due to system changes. Abi Askew, our drafting service lead, will be going on maternity leave shortly, therefore if you would like your partnership reviewing before she finishes then please get in touch by the **end of this week** – Abigail.askew@nwlmcs.org

Practice Sustainability - Greener NHS Funding Opportunities

Please find below funding opportunities and free support for practice sustainability.

[Greener NHS: GP practices](#)

<https://www.lancashireandsouthcumbria.icb.nhs.uk/GreenerNHS/primary-care/gp-practices/funding-opportunities>

Practice Resilience – Promoting a Healthy Partnership

Are you interested in joining a Partnership or are you new to joining?

Does your current partnership not have a partnership agreement?

Would you like to learn more about how a partnership agreement can protect you and your fellow partners?

Join us for a one off **FREE** training session on all things partnership agreements! In that session we will go through what clauses are important to have included and why. We will also discuss how a partnership agreement contributes to a resilient partnership and how it can protect the individual partners, outlining particular liabilities etc.

Date: Tues 19th November – 9am arrival, 9:30am – 11:30am

Venue: Ribby Hall, Preston

If you are interested then please get in touch with our Events Officer - Rebecca.Noble@nwlmc.org

Academy Matters - MLCSU IT Training Newsletter - October 2024

Please see the most recent MLCSU IT training newsletter: [October 2024 - MLCSU Academy](#)

LMC Training Events

Please see a list of upcoming training events being hosted by the LMC:

- [Change Management](#)
- [Conflict Management](#)
- [Sickness Management](#)

To book your place or find out more information, please contact Rebecca.Noblett@nwlmc.org

LMC Vacancies

2 out of our 5 Committees have seats available for GP representation:

- North Cumbria - 2 seats available
- Central Lancashire - 3 seats available

We are keen to hear from GPs, including GP Registrars/ Trainees, who may wish to get involved to represent your constituents. [Please let us know](#) if you are interested in being a LMC member or would like to find out more.